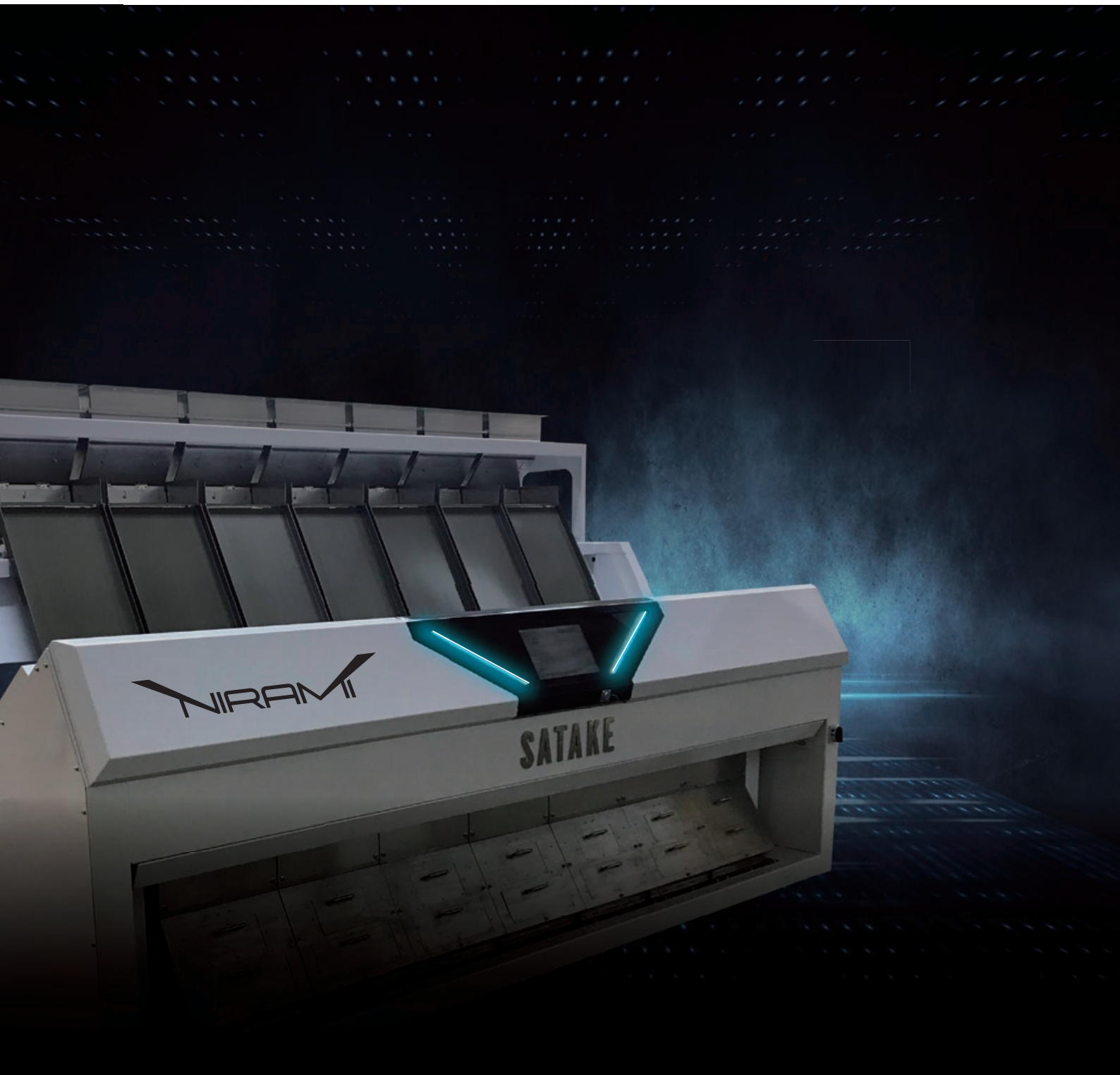


Full-Color RGB, NIR and Shape Sorting

**NIRAM II**

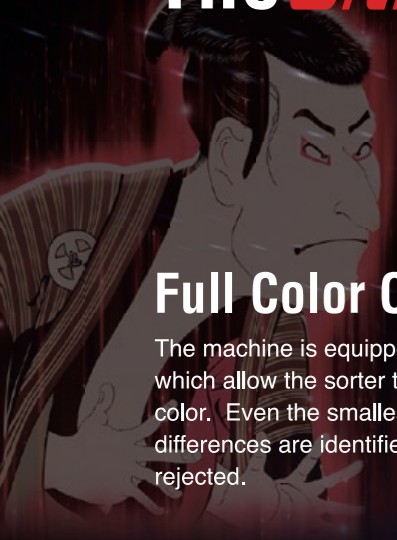
**NRM Series**



NRM7DMS03

**SATAKE CORPORATION**

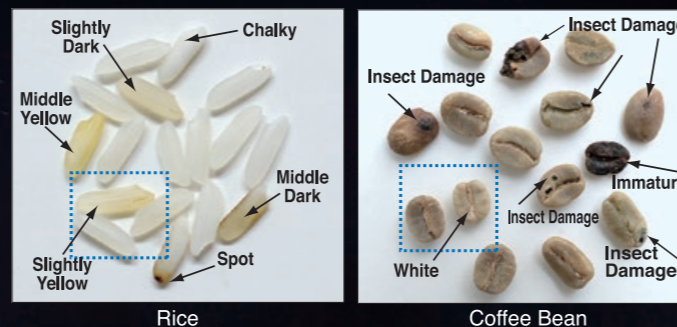
# The *Ultimate* Solution in Optical Sorting



NIRAMI, Satake's brand new full color optical sorter has arrived. Offering the ultimate solution in optical sorting, NIRAMI is sure to fulfill your sorting needs. A distinctive posture seen in the classical Japanese drama of Kabuki, NIRAMI means "to look intensely".

## Full Color Cameras

The machine is equipped with Japan's latest full color cameras which allow the sorter to match the eye's ability to see true color. Even the smallest color differences are identified and rejected.



## Near Infrared (NIR) Camera

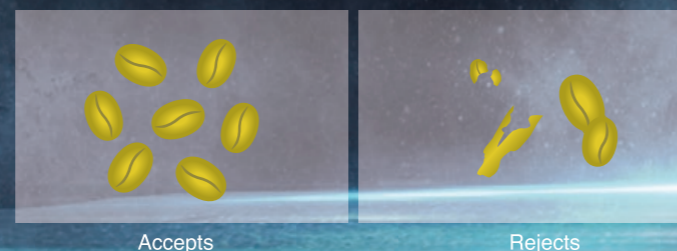
The NIR camera detects inorganic foreign material such as stones, plastic, glass and other items that have a similar color to the accept product. Impurities such as glass, plastic and stones which have the same color as the accept material cannot always be detected by a full color camera. Featuring both NIR high technology camera and RGB full color cameras the NIRAMI has the ability to detect and remove foreign materials.



## Shape Recognition

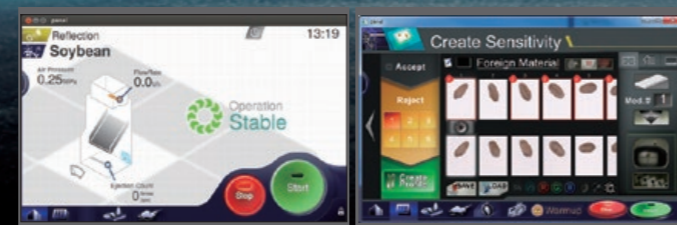
Shape recognition technology enables the machine to sort the material by shape (such as broken or adhered) which conventional color sorters could not achieve.

\*Sorting performance varies depending on variety, size and contamination of material.



## Advanced 3S Software

The 12 inch touch screen is designed for easy use. The user-friendly interface with simple icons and images provides intuitive operation of the machine. The advanced software evaluates the product application and automatically creates the sensitivity for accurate defect removal.



## Sort Various Materials

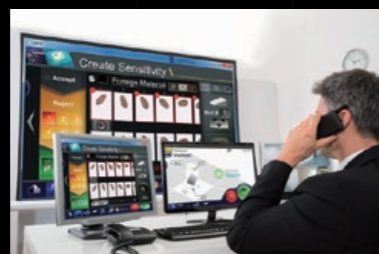
The machine serves the latest requirements for sorting rice, lentils, beans, cereals and nuts etc.



### Remote Panel Control

optional service

Optional remote access via secure internet connection allowing the flexibility to monitor performance and provide diagnostic support.



### Easy Clean



The open type body enables easy access to the cleaning positions.

### High Sorting Capacity



3 to 7 extra-wide chutes (sorting modules) to suit all capacity requirements.

### LED Operation Indicator

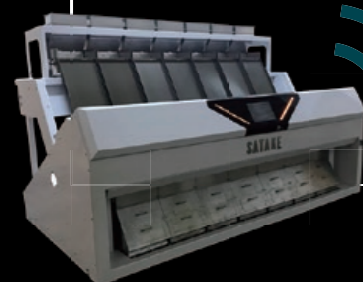


An LED operation indicator on the front of the NIRAMI allows operators to see the machine status at a glance.

### Tertiary Sorting



Precise sorting is achieved with a three stage sorting system. Rejects from the primary sort can be resorted twice, within one unit, to maximise the reject concentration.



## Specifications / Dimensions

NIRAMI	NRM 3					
	RGB			RGB + IR		
	Primary	Resort	Tertiary	Primary	Resort	Tertiary
Chutes - Quantity	3					
- Width (mm)	336					
RGB Camera with LED Light Source	6					
NIR Camera with LED Light Source	-			3		
Ejector Valves	252 @ 4mm					
Air Consumption (NL/Min)	600-1,500 (5.5-11kW Compressor)					
Power Supply (VAC)	Single Phase 220-240 VAC					
Net Weight (kg)	1,220					
Dimensions (mm)	W 1,728 x L 1,766 x H 1,730					

NIRAMI	NRM 5					
	RGB			RGB + IR		
	Primary	Resort	Tertiary	Primary	Resort	Tertiary
Chutes - Quantity	5					
- Width (mm)	336					
RGB Camera with LED Light Source	10					
NIR Camera with LED Light Source	-			5		
Ejector Valves	420 @ 4mm					
Air Consumption (NL/Min)	1,000-2,000 (7.5-15kW Compressor)					
Power Supply (VAC)	Single Phase 220-240 VAC					
Net Weight (kg)	1,730					
Dimensions (mm)	W 2,447 x L 1,766 x H 1,730					

NIRAMI	NRM 7					
	RGB			RGB + IR		
	Primary	Resort	Tertiary	Primary	Resort	Tertiary
Chutes - Quantity	7					
- Width (mm)	336					
RGB Camera with LED Light Source	14					
NIR Camera with LED Light Source	-			7		
Ejector Valves	588 @ 4mm					
Air Consumption (NL/Min)	1,400-3,500 (11-25kW compressor)					
Power Supply (VAC)	Single Phase 220-240					
Net Weight (kg)	2,200					
Dimensions (mm)	W 3,106 x L 1,766 x H 1,730					

\* Sorting performance and capacity vary depending on variety, condition of material and initial contaminations

All copyright and trademark rights of this catalog belong to Satake Co., unless otherwise noted. Unauthorized copying, reprinting, etc. are forbidden. All Satake products are the subject of continuous development and, as a result, their specification may change and differ in detail from those shown.

## SATAKE CORPORATION

### Head Office

2-30 Saijo Nishihonmachi,  
Higashi-Hiroshima-shi, Hiroshima-ken,  
739-8602, Japan  
URL : <https://satake-group.com>

### Korea Branch

Daekyo Building, 16F, 239,  
Daedeok-daero, Seo-gu, Daejeon,  
35229, Korea  
URL : <https://satake-group.com>

### SATAKE USA INC.

10900 Cash Road,  
Stafford, Texas, 77477, U.S.A.  
URL : [www.satake-usa.com](http://www.satake-usa.com)

### SATAKE AMERICA LATINA LTDA.

Rua Xavantes, 155-Pav. 20, Bairro  
Atiradores, CEP 89203-210, Joinville,  
Santa Catarina, Brazil  
URL : [www.satake.com.br](http://www.satake.com.br)

### SATAKE EUROPE LTD.

Horsfield Way, Bredbury Industrial Park,  
Bredbury, Stockport, Cheshire, SK6 2SU,  
U.K.  
URL : [www.satake-europe.com](http://www.satake-europe.com)

### SATAKE INDIA ENGINEERING PVT. LTD.

4th Floor, Tower-1, HB Twin Towers, A2,  
3, 4, Netaji Subhash Place, Wazirpur  
District Centre, New Delhi, 110034, India  
URL : [www.satakeindia.com](http://www.satakeindia.com)

### SATAKE (THAILAND) CO., LTD.

133,134 Moo 5, Bangkadi, Mueang  
Pathum Thani, Pathum Thani 12000,  
Thailand  
URL : [www.satake-th.com](http://www.satake-th.com)

### SATAKE ASIA CO., LTD.

888/84 Mahatun Plaza Bld., 8th Floor,  
Ploenchit Rd., Lumpini, Pathumwan,  
Bangkok, 10330, Thailand  
URL : [www.satake-th.com](http://www.satake-th.com)

### PT. SATAKE GOBEL INDONESIA

Gedung Surabaya Bumi Mandiri, Lantai  
9, Jalan Jenderal Basuki Rachmat  
Nomor 129-137, Unit 905 B, Indonesia  
URL : <https://satake-group.com>

### SATAKE VIETNAM CO., LTD.

Copac Square 12 Ton Dan street, Floor  
3A, Ward 13, District 4, HCMC, Vietnam  
URL : <https://satakevietnam.com>

### SATAKE MANUFACTURING (SUZHOU) CO., LTD.

229 Jin Feng Road, Suzhou New  
District, Suzhou City, Jiangsu Province,  
215129, China  
URL : [www.satake.cn](http://www.satake.cn)

### SATAKE AUSTRALIA PTY. LTD.

15 Leland Street, Penrith, N.S.W.,  
2750, Australia  
URL : [www.satake.com.au](http://www.satake.com.au)

ISO 9001 Certification  
(Quality Management Systems)

ISO 14001 Certification  
(Environmental Management Systems)

SATAKE CORPORATION has obtained ISO9001  
and ISO14001 certification.  
These international standards for management  
systems ensure Satake will continue to provide  
high quality products and services.