

The Navigator 4.0 enables you to take control over the cleaning process and obtain process stability.

The Navigator 4.0 control system offers the below key features:

- Adaptive Aspiration Control [AAC] – stable air speeds | Pre- and final aspiration, ± 0.1 m/s
- Easy access to machine settings
- Intelligent alarms
- Full connectivity – the system can interchange data with other systems
- Prepared for Cloud enabling
- Recipe management
- Trend curve process monitoring

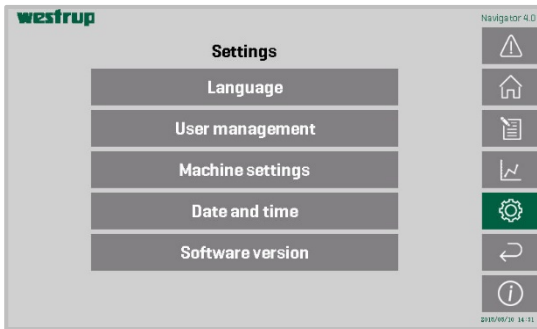
Installation requirement:

- 1 x 230V, 10A + PE

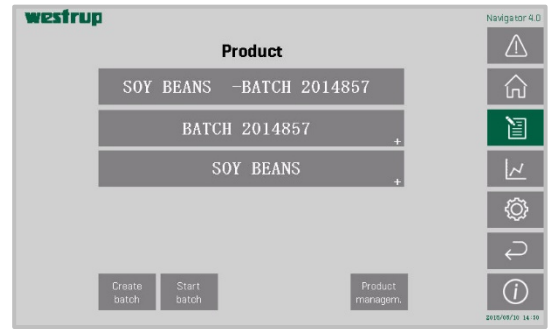
Options:

- *Rugged Tablet HMI – machine operation at your fingertips*
- *Connectivity kit [wireless machine communication]*
- *Intelligent Screen Management [ISM] – verification of correct screen usage [coming soon]*
- *Adaptive Capacity Control [ACC] – stable screen utilisation [coming soon]*

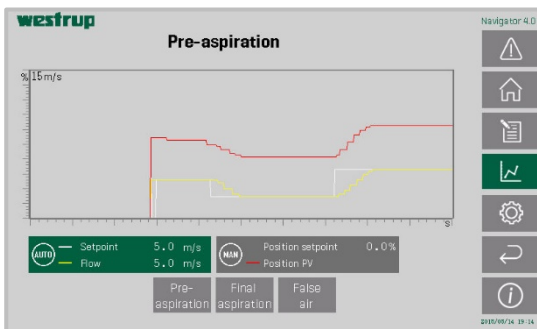
We provide valuable insights, so you can make qualified decisions



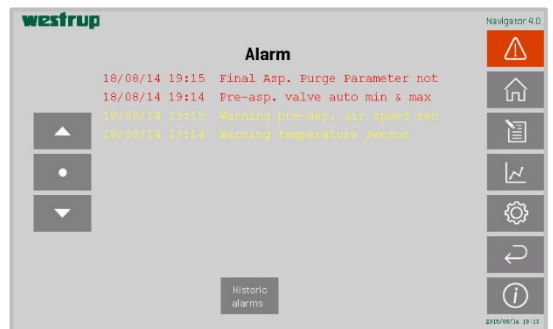
The 'Settings' page allows you to set up your Navigator system to fit your requirements.



The 'Product' page allows you to create a new batch, start an already existing setup and manage your recipes.



The 'Trend' page allows you to view the control system performance over a defined period of time.



The 'Alarm' page allows you to see exactly where something is wrong, which enables you to solve the problem quickly.

Legacy

The Navigator 4.0 is our first release in the line of new features. However, the automatization and monitoring of machines and processing plants is not new to us.

Back in the 1980s, when computers were only just being installed in most companies, Westrup developed the very first prototype of a computer air control system – the first version of the Adaptive Aspiration Control. This was named KAMATROL. Some years later, a new version of the KAMATROL was released – this time the system included sensors that measured the screen load. This KAMATROL system laid the groundwork for the Adaptive Capacity Control [ACC] system – another new feature, which will be released soon.

We kept developing – and 20 years later the first version of the Navigator system was announced. Navigator 2.0 was developed based on the knowledge we collected from the KAMATROL system.

The hands-on experience and in-depth knowledge we have gathered during the past 35 years has laid the foundation for developing the newest Navigator 4.0 system. New and more precise measuring methods have enabled us to develop a system that allows for a very high separation precision, which was not possible before.

This time around, the Navigator 4.0 system will be released as a modular feature, giving you the possibility of adding the features that best suit your requirements.