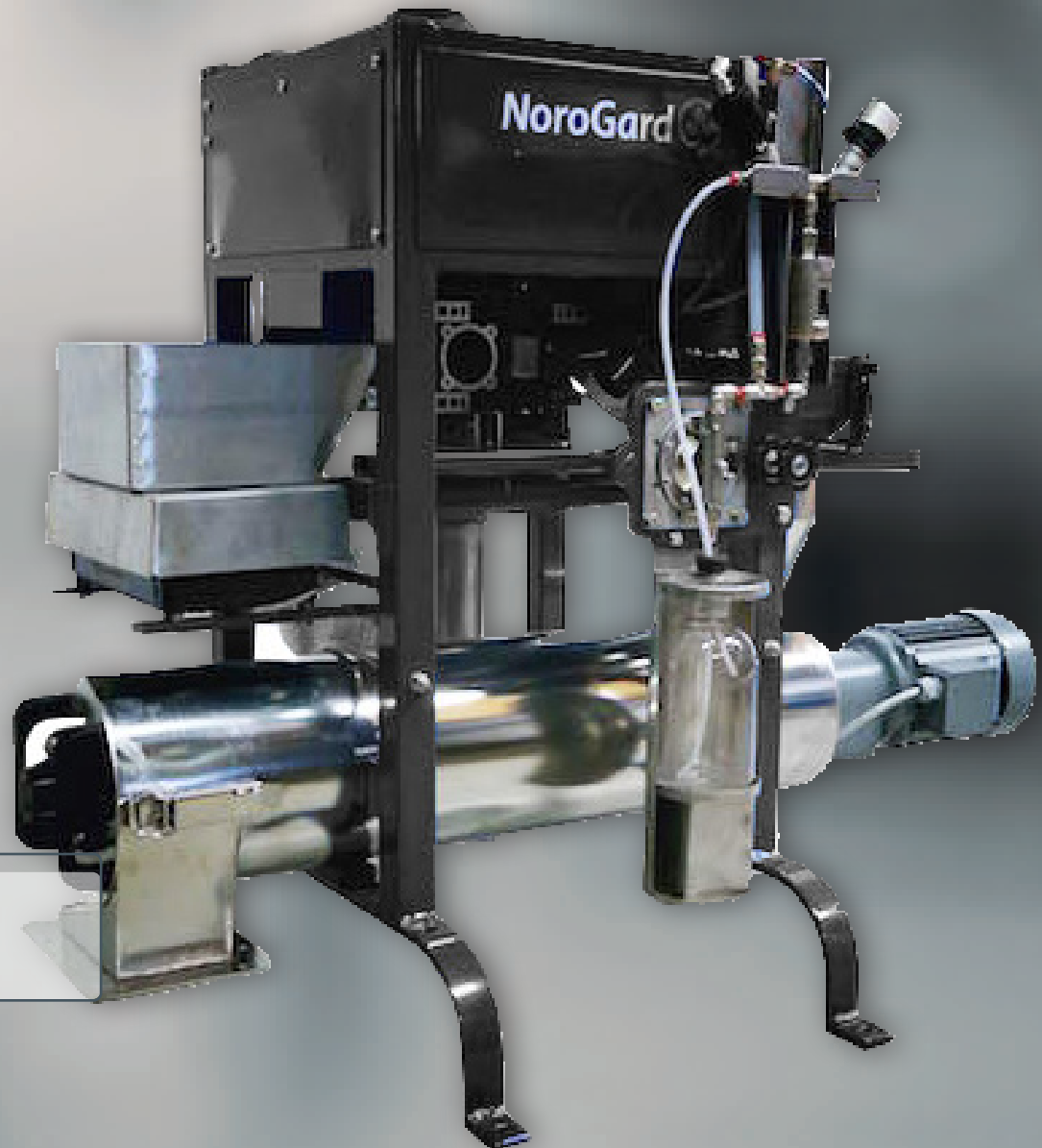


The R8 is a combination of state-of-the-art engineering, innovation and design.

The new compact R8 is sophisticated and performs top-quality application from first to last kernel.

NoroGard westrup R8 Continuous Seed Treater



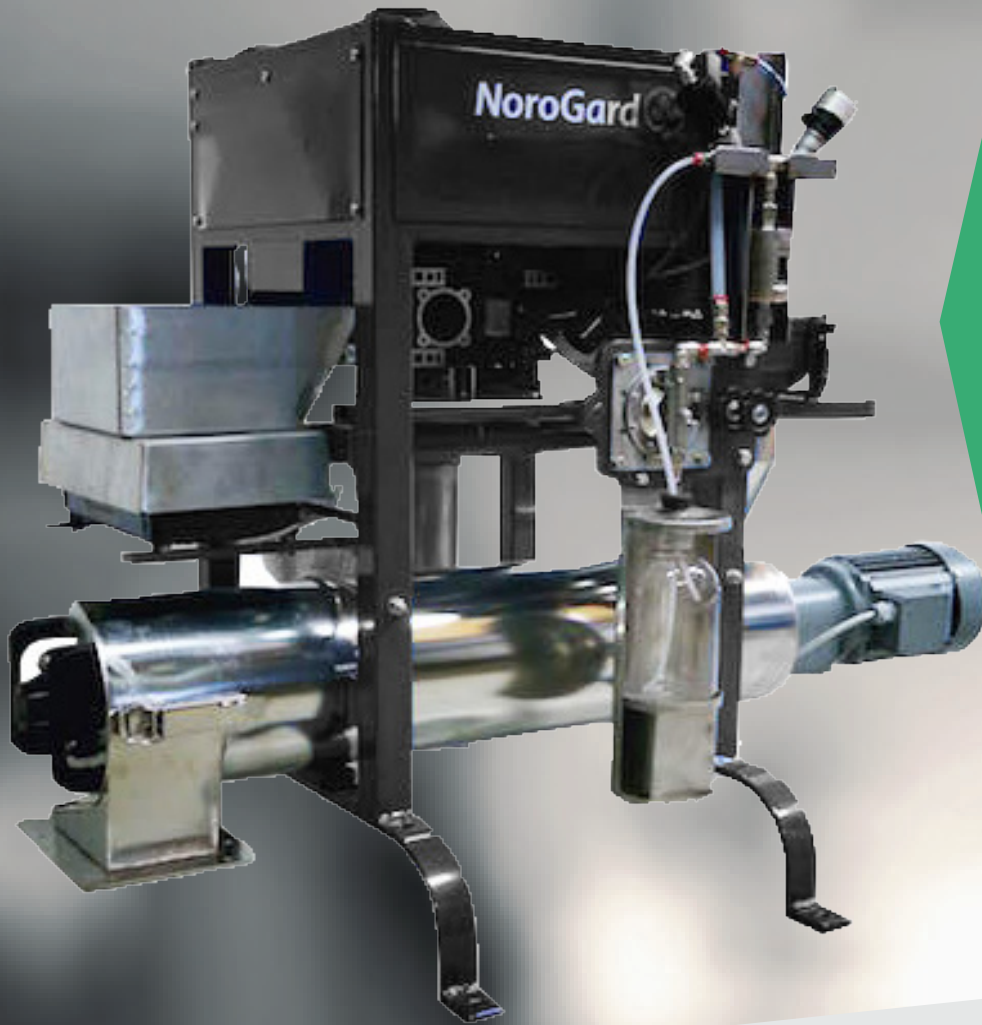
CAPACITY

2.9-7.2 ton/hour

The R8 Continuous Seed Treater provides a capacity to treat from a batch of 3 litre up to 8 tons/hour which makes it suitable not only in production, but also for laboratory use. This makes it easily adapted for small and medium sized treatment plants.

NoroGard  westrup

R8 Continuous Seed Treater



The Continuous Seed Treater meets the requirements for:

- Compact design
- High application quality
- Continuous control of dosage rate
- Easy cleaning
- Easily operated
- Integrated hectolitre weigher

The Continuous Seed Treater is recommended for the processing of volume seeds. The treater has an even flow of both seeds and the treating liquids that is continuously measured.

The R8 Continuous Seed Treater is a machine designed for seed plants with a need for treatment of cereals, corn, peas, soybeans, cotton, sunflowers, etc with a capacity between 3.2 - 8 tons per hour. The treater provides easy dosage calibration within a closed system, easy and quick cleaning and accurate application, all within its compact and reliable construction.

The seed is measured by an integrated hectolitre weigher in order to make sure you get the proper application rate to each seed batch. The treater is equipped with sensors that detect start of treatment, which can be controlled to synchronize liquid delivery to the seed. The machine is also designed with a sophisticated dust evacuation to provide high-quality application, and a supervising system that stops the coater when failure occurs.

The calibration and/or checking of the dosing rate is done within the closed system in order to prevent seed or treating liquid from being sacrificed with complete operator safety.

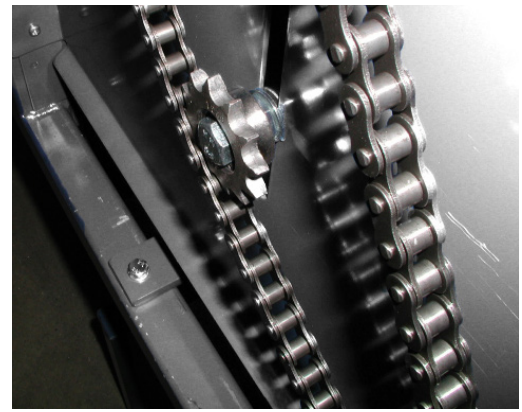
Our pumps are made in house and specially designed to perform under tough conditions. The Diaphragm pump is outstanding in reliability and low maintenance in comparison to any peristaltic pump on the market. The pumps have a pressure equilization for an even flow with less pulses, which insures high dosing accuracy. The pumps are also reversible, easy to operate and have a long life cycle.

The machine is easily operated by our software through a touch screen and delivered with an Ipad for extern access and supervision possibilities via internet. The Ipad also functions as a remote control.

The R8 is approved for the European CE worker's safety standard.

TECHNICAL SPECIFICATION

Power requirement	2.0 Kw
Capacity ton/hour (wheat with density 760 kg/m ³)	2.9-7.2 ton/hour
Compressed air	50 litre / min
Dosage system	1-8 (see options)
Dosage rate (per system)	50-1000 ml/100kg
Max suction height	3 m
Weight	212 kg
Width	800 mm
Depth	1180 mm
Height	960 mm
Warranties	Orgalime S2012



Our technology is built to last for 20 years.



Calibration of the dosage system is easily operated and controlled in a closed system.

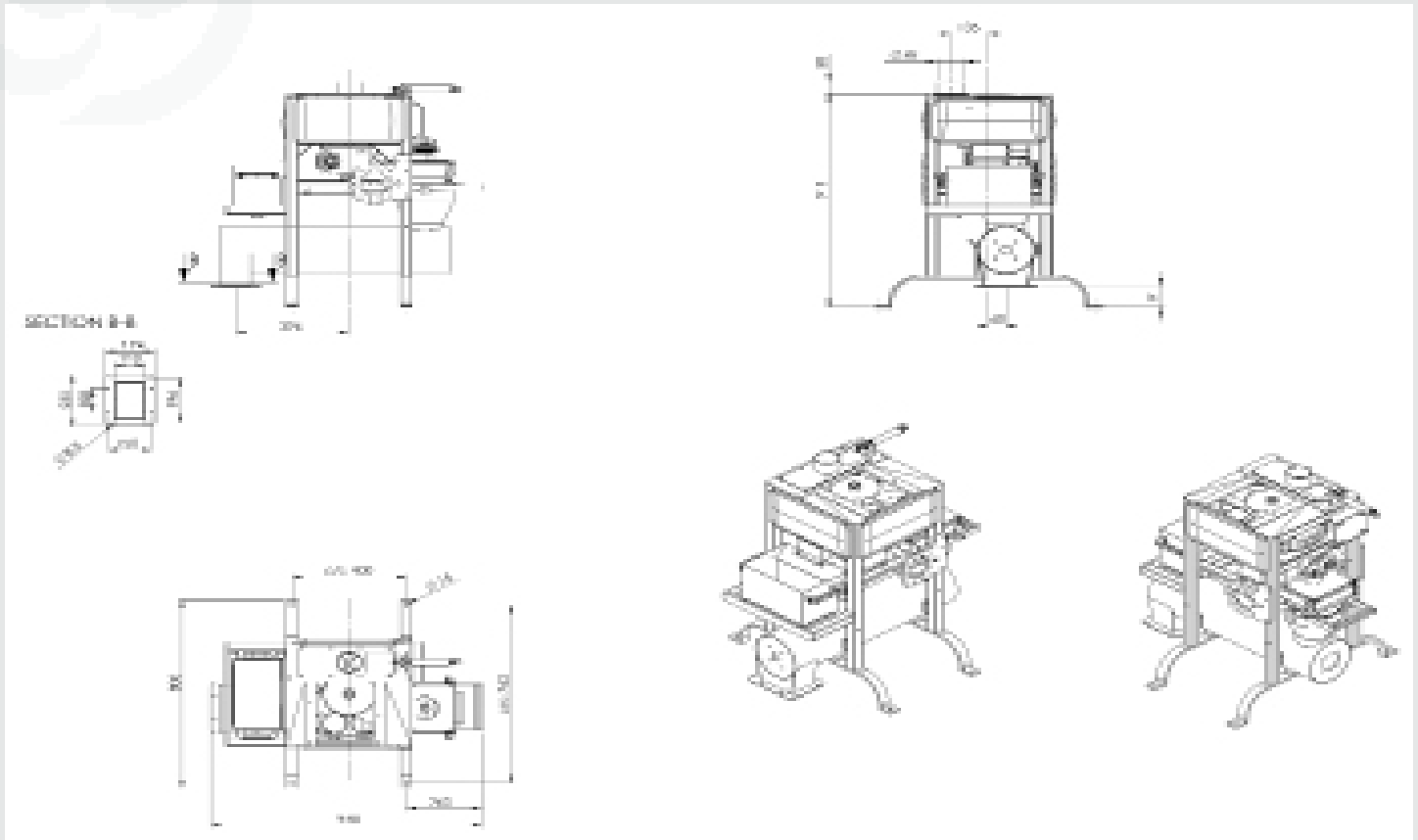
TECHNICAL SPECIFICATION OPTIONAL CONTROL SYSTEMS

	R8 ULD
Continuous flow control of dosage rates	Yes
Touch screen	7"
Remote access to PLC via LAN	Yes, connect to our service department and/or remote computer/device.
PLC Control System	Schneider Electric and Norogard Control Software
Calibration	Manually, with integrated hectolitre weigher

OPTIONS

- Remote control cabinet consisting of a touch panel and a start/stop button. Should preferably be placed at the filling up station.
- Extra dosing systems, maximum 8, for liquids. Each dosage system has a capacity of 50-1000 ml/100kg seeds.
- Powder feeding system.
- Extra mixing tube
- Printer for printing out statistics
- Customization for treatment of grass seed.

R8 CONTINUOUS SEED TREATER · MEASUREMENTS



NOROGARD · WESTRUP

NoroGard was founded in Sweden where the development and production of high quality Seed Treatment Equipment began in 1965. In 2022 the production of Seed Treatment Equipment was taken over by Westrup A/S in Denmark under the NoroGard · Westrup fusion.

The NoroGard · Westrup seed treaters are designed to be extremely reliable and built to last for more than 20 years. The NoroGard dosage systems are unique and equipped with pumps and flow meters of our own design, in order to offer you the best possible application quality and reliability.

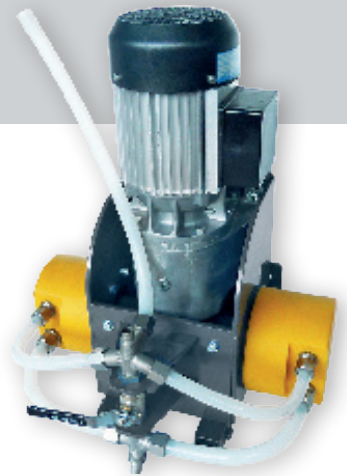
Personal service and customization is key. NoroGard · Westrup delivers sophisticated Seed Treaters worldwide with personal support. The seed treaters are built to last. Should a standstill occur in spite, we always keep your spareparts in stock.

OUR INNOVATIONS

The NoroGard · Westrup pumps are one of our innovations developed and made in-house and specially designed to perform under tough conditions.

The Diaphragm pump is outstanding in reliability and low maintenance compared to any peristaltic pump on the market.

Our pumps have a pressure equalization for an even flow with less pulses, which insures high dosing accuracy. The pumps are also reversible, easy to operate and have a long life cycle.



NoroGard westrup

Westrup A/S,
DK-4200 Slagelse, Denmark
+45 58 52 25 64
info@westrup.com
www.westrup.com